

URBAN TECH

Smart City Technologies

Official Distributor

Adresa: Strada Buftea, Nr. 1
E-mail: office@urban-tech.ro
Telefon: +40 747 058 458
Website: urban-tech.ro

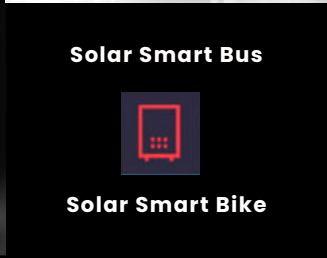
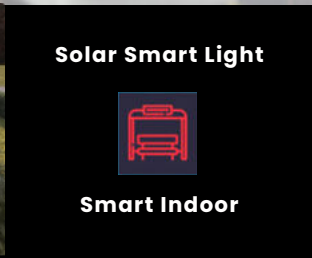
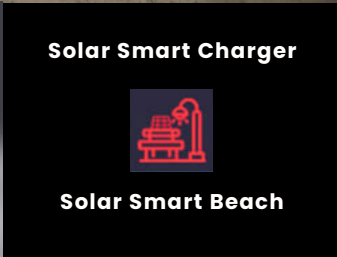
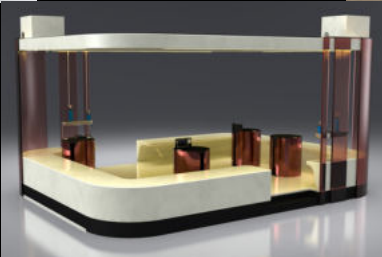
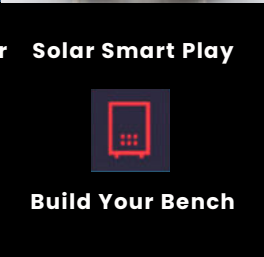
WELCOME

Urban Tech Company offers solutions for the development and efficiency of cities, through which it is desired to increase the quality of life and preserve an eco-friendly urban environment.



WELCOME

Urban Tech, new partner of Adlis/Weiyn Corp. (Adlis Smart) are key partners in the assembly process of the products.



1 - INTRODUCTION

The concept in the new technology is the future.

2 - SOLAR SMART BENCH

Introducing some Solar Smart Bench Models

3 - SOLAR SMART TABLE

Introducing some Solar Smart Table

4 - SOLAR SMART BUS SHELTER

Introducing the new Solar Smart Bus Shelter Model

5 - SOLAR SMART CHARGER

Introducing some Solar Smart Charger

6 - SPECIAL PRODUCTS

We present some Special Products

7 - SOLAR SMART TRASH - BIN

Introducing some Solar Smart Bin



INTRODUCTION 01

Urban Tech provides solutions for the development and optimization of cities, with the goal of improving the quality of life and maintaining an eco-friendly urban environment.

These technologies are designed to benefit the entire community, ensuring comfort and safety, while also offering customized solutions for individual cases that meet the desired standards.

The fields of activity encompass solutions through which numerous objectives and standards can be achieved, leading to the development of Smart City infrastructure.

In our pursuit of excellence, Urban Tech's areas of focus encompass a broad spectrum of initiatives. These encompass a multitude of objectives and standards, all converging towards the realization of cutting-edge Smart City infrastructure.

Whether it's enhancing urban mobility, streamlining energy consumption, or fostering efficient waste management, our solutions are tailor-made to leave a lasting positive impact.

02

SOLAR SMART BENCH

Solar Smart Bench, Creation & Innovation. A product controlled by our AI NVIDIA System platform, includes all the necessary smart components



SOLAR SMART BENCH





Material: 201 stainless steel
Dimensions: L: 205cm / W: 46cm / H: 47cm
Solar panel: 90W
Battery voltage: 12V
Battery capacity: 55AH
Controller type: MPPT
Estimated weight: 80kg
USB charging ports: 2
Wireless charging: 5V/2.1A
Wireless charging: 2 units
LED Strip Light: Warm White/White/RGBW
Advertising Optional: LED light box / LED display
Bluetooth speaker: 5/12V
4G International router





Material: 201 stainless steel + WPC WOOD
Dimensions: L: 180cm / W: 46cm / H: 48cm
Solar panel: 90W
Battery voltage: 12V
Battery capacity: 55AH
Controller type: MPPT
Estimated weight: 70kg
USB charging ports: 2
Wireless charging: 5V/2.1A
Wireless charging: 2 units
LED Strip Light: Warm White/White/RGBW
Advertising Optional: LED light box / LED display
Bluetooth speaker: 5/12V
4G International router

SOLAR SMART BENCH

UrbanTech

WYC1916



Material: 201 stainless steel + WPC WOOD
Dimensions: L: 203cm / W: 68.6cm / H: 309cm
Solar panel: 135W
Battery voltage: 12V
Battery capacity: 55AH
Controller type: MPPT
Estimated weight: 180kg
USB charging ports: 2
Wireless charging: 5V/2.1A
Wireless charging: 2 units
LED Spot Light: Warm White/White/RGBW
Advertising: LED light box / LED display
Optional
Bluetooth speaker: 5/12V
4G International router



SOLAR SMART BENCH



WYC1903A



Material: 201 stainless steel + WPC WOOD

Dimensions: L- 181cm, W- 55cm, H- 45/73cm

Solar panel: 90W

Battery capacity: 12V / 55AH

Controller type: MPPT

Estimated weight: 60kg

USB charging ports: 2

Wireless charging: 5V/2.1A

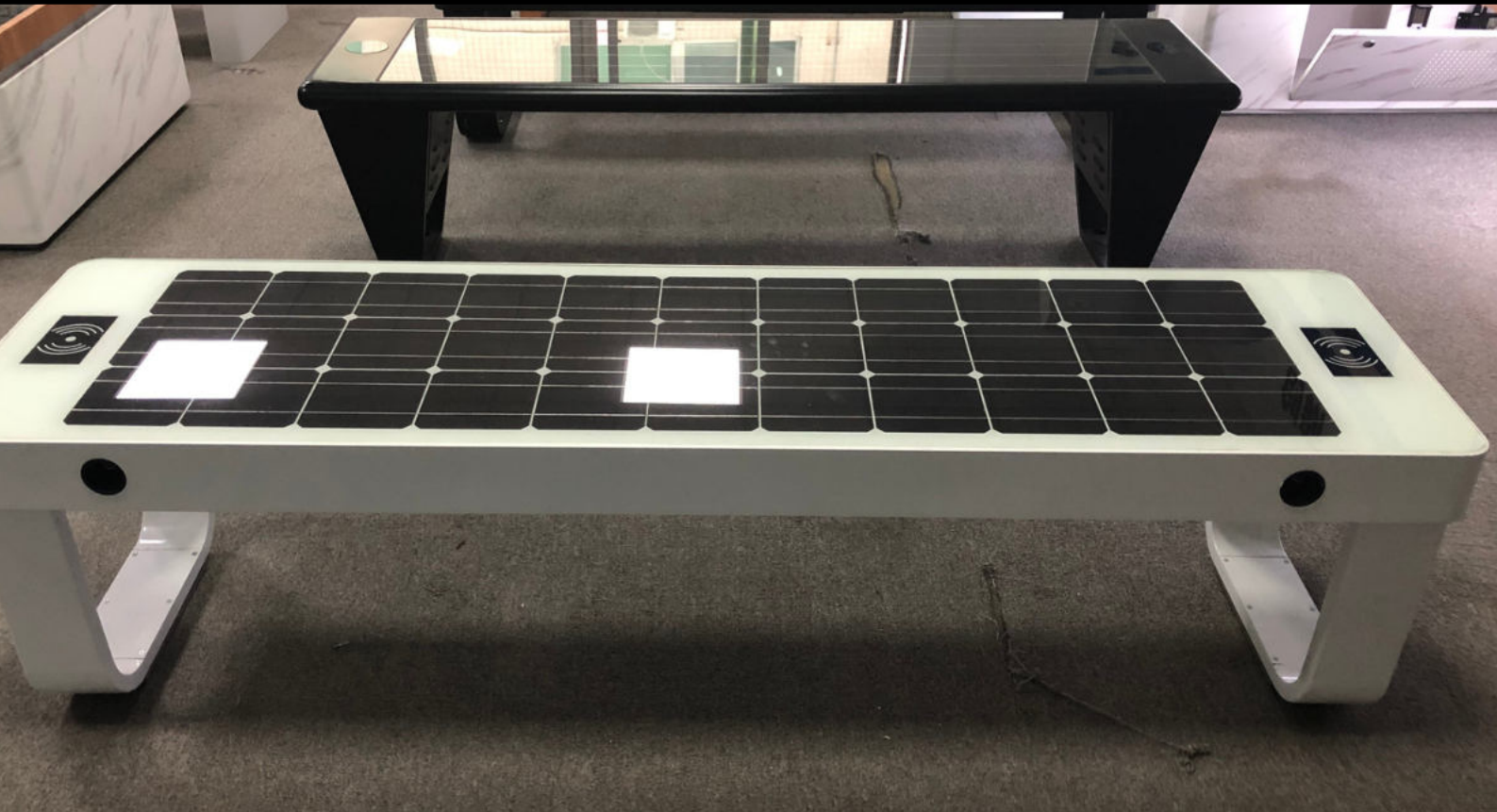
Wireless charging: 2 units

LED Strip Light: Warm White/White/RGBW

Bluetooth speaker: 5/12V

4G International router





Material: Stainless steel #201
Dimensions: L- 170cm, W- 45cm, H- 45cm
Solar Panel: 90W
Battery capacity: 12V, 55AH
Controller Type: MPPT
Weight: estimated 60kg
USB charger: 2
Wireless charger: 2
Ambient light: LED strip RGBW/Warm White
Bluetooth speaker: 5/12V
Wi-Fi: 4G/International router

SOLAR SMART BENCH

 UrbanTech

WYC1826



Material: 201 stainless steel + WPC WOOD

Dimensions: L: 195cm / W: 80cm / H:
36/110cm

Solar panel: 54W

Battery voltage: 12V

Battery capacity: 55AH

Controller type: MPPT

Estimated weight: 80kg

USB charging ports: 2

Wireless charging: 5V/2.1A

Wireless charging: 1 units

LED Strip Light: Warm White/White/RGBW



Solar Smart Street Furniture

Leading and managing Solar Smart sustainable products that generate a positive impact for everyone.



03



NEW CONCEPT | SPECIAL DESIGN |

Material: Stainless steel #201 + WPC wood
Dimensions: L- 165cm, W- 142cm, H- 77cm
Solar Panel: 90W
Battery capacity: 12V, 55AH
Controller Type: MPPT
Weight: estimated 120kg
USB charging:
Number of ports: 4
Power (per port): 5V (2.1A)
Wireless charging: 2
Ambient light: LED strip RGBW/Warm White
Bluetooth speaker: 5/12V
Wi-Fi: 4G/International router



Material: Stainless steel #201 + WPC WOOD

Dimensions: L- 188cm, W- 170cm, H- 77cm

Solar Panel: 118W

Battery capacity: 12V, 55AH

Controller Type: MPPT

Weight: estimated 180kg

USB charging:

Number of ports: 4

Power (per port): 5V (2.1A)

Wireless charging: 2

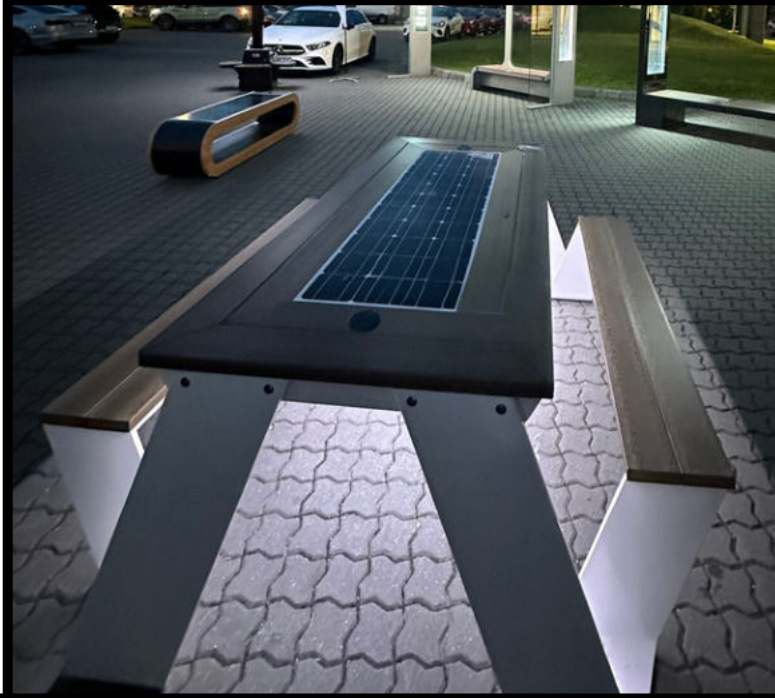
Ambient light: LED strip RGBW/Warm White

Bluetooth speaker: 5/12V

Wi-Fi: 4G/International router



UrbanTech WYC1811A



SMART CITY INTEGRATED MANAGEMENT SYSTEM

SMART CITY - AI

BIG DATA
ADVANCED ANALYTICS
AND VISUALIZATION

Control and monitor all Smart Street Furniture

It allows developing efficient local smart strategies adapted to each situation and each area separately.

You can program and control each alarm and action plans to control and prevent failures, vandalism, maintenance and others.

Economic efficiency and flexibility in Cloud Data, Cloud Hosting adapted to each client.

Information and transparency with citizens to receive information, marketing, QR and others.

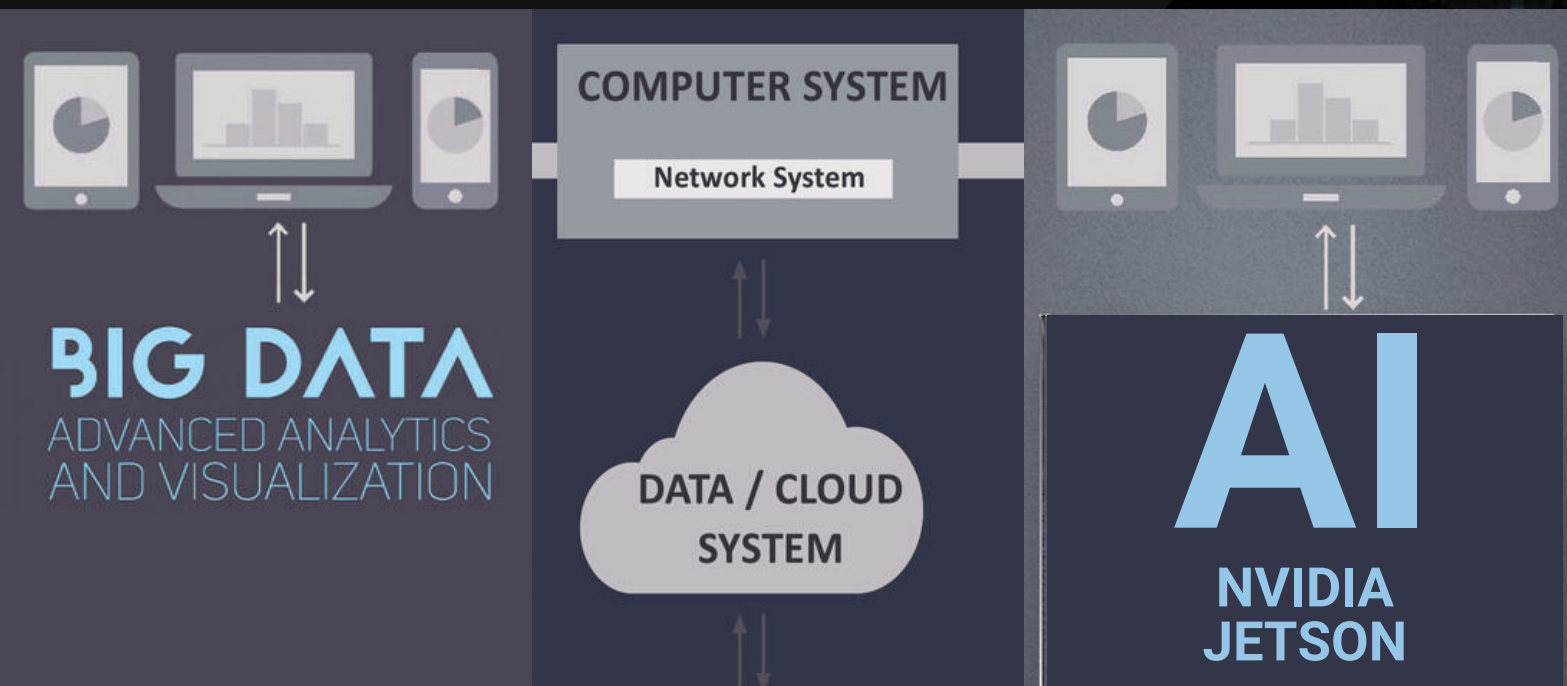
Reduction in maintenance, in costs, in receiving the information of each Smart street furniture.

Total control in urban areas such as isolated areas



SMART CITY INTEGRATED MANAGEMENT SYSTEM

SMART CITY - AI



Components Connected with NVIDIA AI JETSON

Our Standard Platform

- Sensor Alarm
- Motion Sensor
- Sensor Temperature
- Bluetooth Speaker
- USB Charger
- Wireless Charger
- Solar Panel
- MPPT Controller
- Led Light / Intensity - ON/OFF
- Timing Schedule
- Battery
- Router
- LED SCREEN
- GPS

Components Connected with NVIDIA AI JETSON

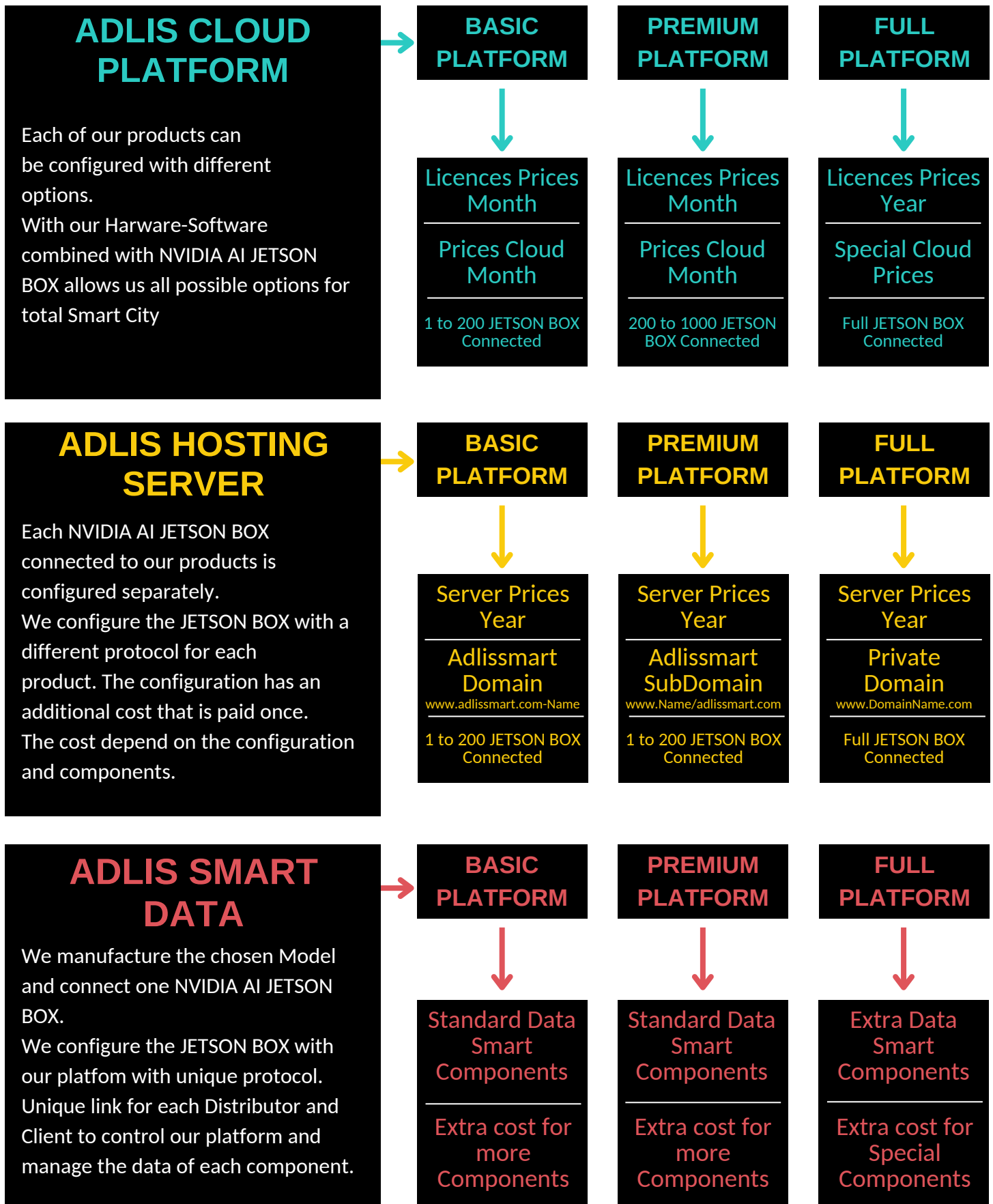
Optional:

- Sensor CO2
- Sensor Waterproof
- Sensor Humidity
- Sensor Wind Speed
- Sensor Wind Direction
- Sensor Atmospheric Pressure
- Sensor Noise
- Sensor Filled Alarm
- Sensor PM10 - PM2.5
- Sensor Bin Automatic Door
- Sensor Bin Capacity
- Sensor + Laser People Counters
- Trash Compactor Control
- Desinfection
- Network Notice
- Smart Voice / Voice broadcast
- Voice broadcast
- Digital Display
- AC-DC Power Inverter
- Camera
- Cooling System

For more information about AI NEW GEN Platform contact:

office@urban-tech.ro

ADLIS SMART CITY INTEGRATED MANAGEMENT SYSTEM



- Our Platform is configured with the standard components in all our models.
- Standard components connected to an NVIDIA AI Jetson Box to be able to control all Standard components and manage data.
- Each Jetson Box has an extra cost: **MODEL + JETSON BOX + Platform Plan**
- To receive information about our standard components list and prices for Basic/Premium/Full Platform contact: office@urban-tech.ro

04

SOLAR SMART BUS SHELTER

New Solar Smart Bus Shelter, Creation & Innovation. A product controlled by our AI NVIDIA System platform, includes all the necessary smart components



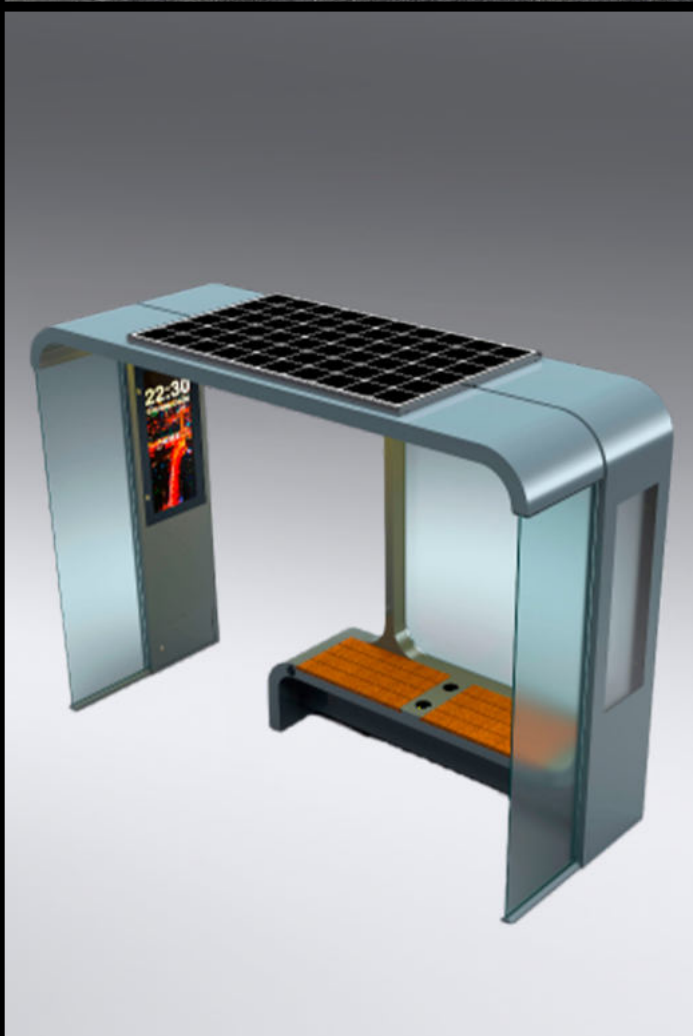
SOLAR SMART BUS SHELTER



SOLAR SMART BUS SHELTER

UrbanTech

WYS1817



201 stainless steel + WPC WOOD
Tempered glass
Size: L4000mm x W1100mm x H2220mm
Solar panel: 420W
Battery capacity: 12V/200AH
LED strip light inside
USB charger: 2
Advertising display: 1 LED light box * 2
window
LED screen:
Full color, 1pc, 800*320mm
Digital screen optional
Bluetooth speaker: 5/12V
Wi-Fi: 4G/International router

ADLIS
WEIYIN
Official Manufacturer



- Material: 201 stainless steel + WPC WOOD
- Tempered glass
- Size: L6000mm x W1100mm x H2220mm
- Solar panel: 840W
- Battery capacity: 12V / 300AH
- Controller type: MPPT
- USB charging ports: 4
- Wireless charging: 4 units
- Advertising display: 2 LED light box * 2 window
- LED screen:
Full color, 1pc, 800*320mm
- Digital Screen Optional**
- Bluetooth speaker: 5/12V
- Wi-Fi: 4G/International router

SOLAR SMART BUS SHELTER

UrbanTech

WYS1826



Material: Stainless steel #201 + WPC WPC
+ Tempered glass

L- 400cm, W- 150cm, H- 230cm

Option: L- 500/600cm

Solar Panel: 420W/840W

Battery capacity: 12V / 200AH/300AH

Controller Type: MPPT

USB charger: 4pcs

Wireless charger: 2pcs

AC POWER INVERTER

LED Spot light: Warm White/White

Bluetooth speaker: 5/12V

Wi-Fi: 4G/International router

AUTOMATIC OPEN/CLOSE DOOR OPTIONAL

SMART JETSON BOX- ADLIS SMART PLATFORM

WATERGEN SYSTEM DRINK WATER

 **ADLIS
WEIYIN**
Official Manufacturer

05

SOLAR SMART CHARGER

Solar Smart Charger, Creation & Innovation. A product controlled by our AI NVIDIA System platform, includes all the necessary smart components



SOLAR SMART CHARGER



SOLAR SMART CHARGER

UrbanTech **WYC1801A**



Material: 201 stainless steel + WPC WOOD
D: 125cm / W: 125cm / H: 250cm
Solar panel: 135W
Battery voltage: 12V
Battery capacity: 55AH
Controller type: MPPT
Estimated weight: 110kg
USB charging ports: 4
Wireless charging: 5V/2.1A
Wireless charging: 2 units
LED Strip Light: Warm White/White/RGBW
Advertising Optional: LED light box / LED display
Bluetooth speaker: 5/12V
4G International router





Material: 201 stainless steel
Dimensions: D(table)-64cm, H- 250cm
Solar Panel: 48W
Battery capacity: 12V, 30AH
Controller Type: MPPT
Weight: estimated 85kg
USB charger: 2
Wireless charger: 3
Ambient light: LED spot light white
Cigarette lighter and ashtray
Wi-Fi: 4G/International router



06

SPECIAL PRODUCTS

New Special products, Creation & Innovation. A product controlled by our AI NVIDIA System platform, includes all the necessary smart components

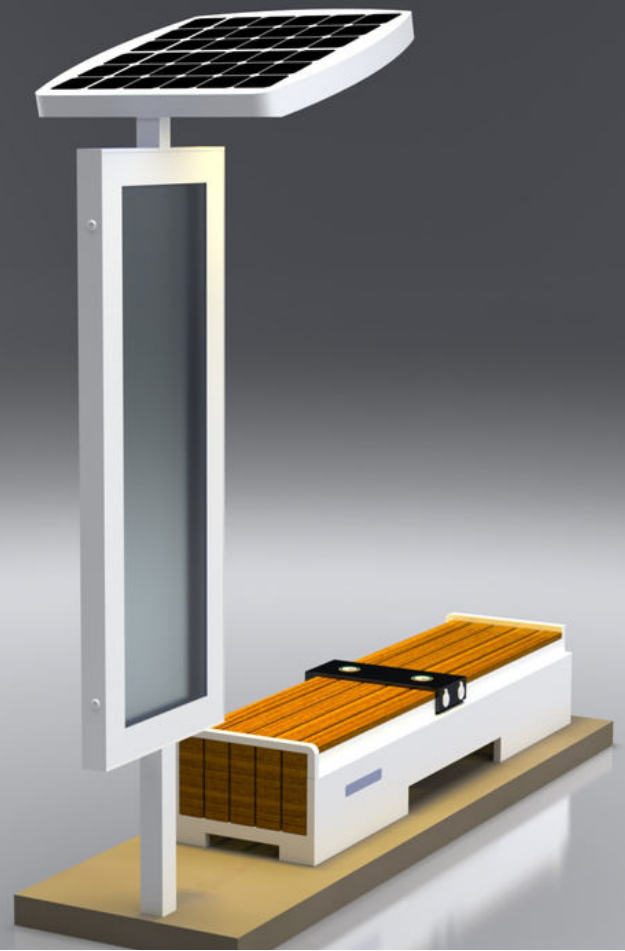


SPECIAL PRODUCTS





Material: 201 stainless steel + WPC WOOD
L: 203 cm / W: 68.6 cm / H: 43/240 cm
Solar Panel: 126W
Battery capacity: 12V / 55AH
Controller Type: MPPT
Estimated weight: 100kg
USB charging ports: 4
Wireless charging: 5V/2.1A
Wireless charging: 2
LED lighting strips: Warm white / White / RGBW
Advertising: 2 LED light box
Bluetooth speaker: 5/12V
International router 4G





Material: 201 stainless steel
L: 119cm / W: 104cm / H: 45cm
Solar panel: 80W
Battery voltage: 12V
Battery capacity: 55AH
Controller type: MPPT
Estimated weight: 60kg
USB charging ports: 2
Power charging: 5V/2.1A
Wireless charging: 2 units
LED Strip Light: Warm White/White/RGBW
Bluetooth speaker: NO
4G International router



07

SOLAR SMART BIN/TRASH

Solar Smart Bin/Trash, Creation & Innovation. A product controlled by our AI NVIDIA System platform, includes all the necessary smart components



SPECIAL PRODUCTS





SMART TRASH - WASTE + BOTTLE + PAPER

Material: 304 stainless steel

L: 177cm / W: 62cm / H: 110cm

Capacity: 160L * 3

Solar panel: 156W

Battery voltage: 12V

Battery capacity: 55AH

Controller type: MPPT

Estimated weight: 180kg

LED control capacity: Green/Red

Sensor door opening/Voice Broadcast

Filled alarm

Disinfection

4G WIFI international router



UrbanTech WYB2006



Material: 304 stainless steel
L: 53cm / W: 63cm / H: 120cm
Capacity: 90L * 2
Solar panel: 45W
Battery voltage: 12V
Battery capacity: 20AH
Controller type: MPPT
Estimated weight: 110kg
LED control capacity: Green/Red
Sensor control capacity
Sensor door opening/Voice Broadcast
Filled alarm / Disinfection
Bluetooth speaker: 5/12V
4G International router

ADLIS WEIYIN
Official Manufacturer





Adresa: Strada Buftea, Nr. 1
E-mail: office@urban-tech.ro
Telefon: +40 747 058 458
Website: urban-tech.ro

Partner and Assembly process in Romania

www.urban-tech.ro

www.adlissmart.com

Urban Tech Company offers solutions for the development and efficiency of cities, through which it is desired to increase the quality of life and preserve an eco-friendly urban environment.

Urban Tech, new partner of Adlis/Weiyin Corp. (Adlis Smart) are key partners in the assembly process of the products.

The 3 models shown here are Globally Exclusive to the Urban Tech Company. The assembly process of the 3 models will be made in Romania, complete with romanian certification.

For any interest contact Urban Tech:

office@urban-tech.ro

www.urban-tech.ro

M +4 0747058458

M +4 0751975727



NVIDIA
INCEPTION
PROGRAM

NEXT GEN OF ADLIS INTEGRATED SYSTEM POWERED BY NVIDIA JETSON



UrbanTech



Solar Smart Street Furniture

The concept in the new technology is the future. Simplicity of communication, Individual solutions for customers.

Our concepts reflect our imagination and common sense.

We provide a wide range of services, Design 3D/AR/VR/CAD...

We create all the ideas, manufacturing our and your products.

Adresa: Strada Buftea, Nr. 1

E-mail: office@urban-tech.ro

Telefon: +40 747 058 458

Website: urban-tech.ro